

# LP BULLETIN

Friday 02 November 2007

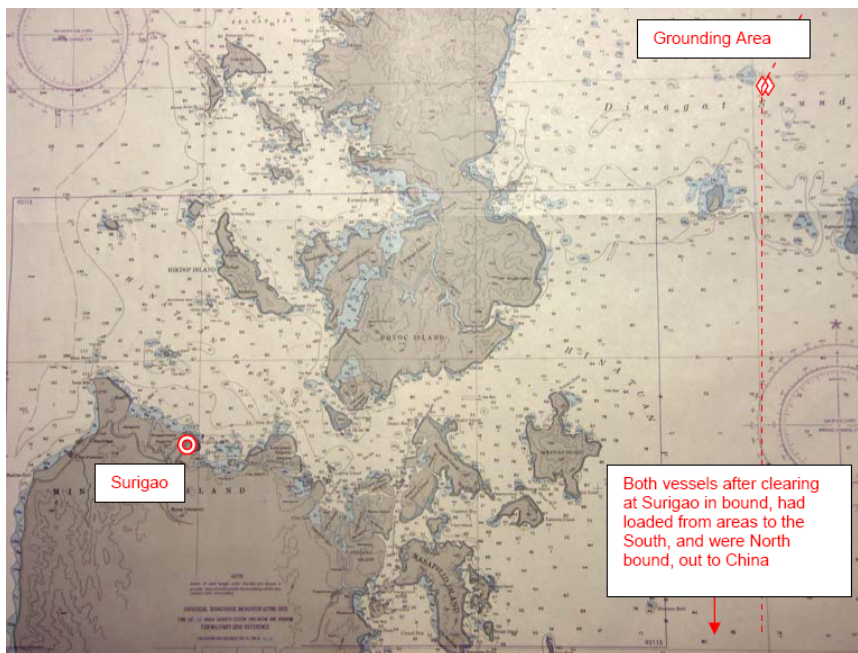
## Bulletin 550 - 11/07 - Navigation warning - Philippines

**A UK Club correspondent in the Philippines has warned of recent groundings on an uncharted reef at Dinagat Sound, Mindanao. Affected charts include British Admiralty chart 4475, United States chart 92110, and Philippine chart 4629.**

The charted depth of the coral reefs and shoals (based on partial surveys conducted before 1930) is 27.5m but the reef creates an actual depth of 10m. Two ships have recently grounded on the reef with sailing draughts of 11.8m and 12.5m.

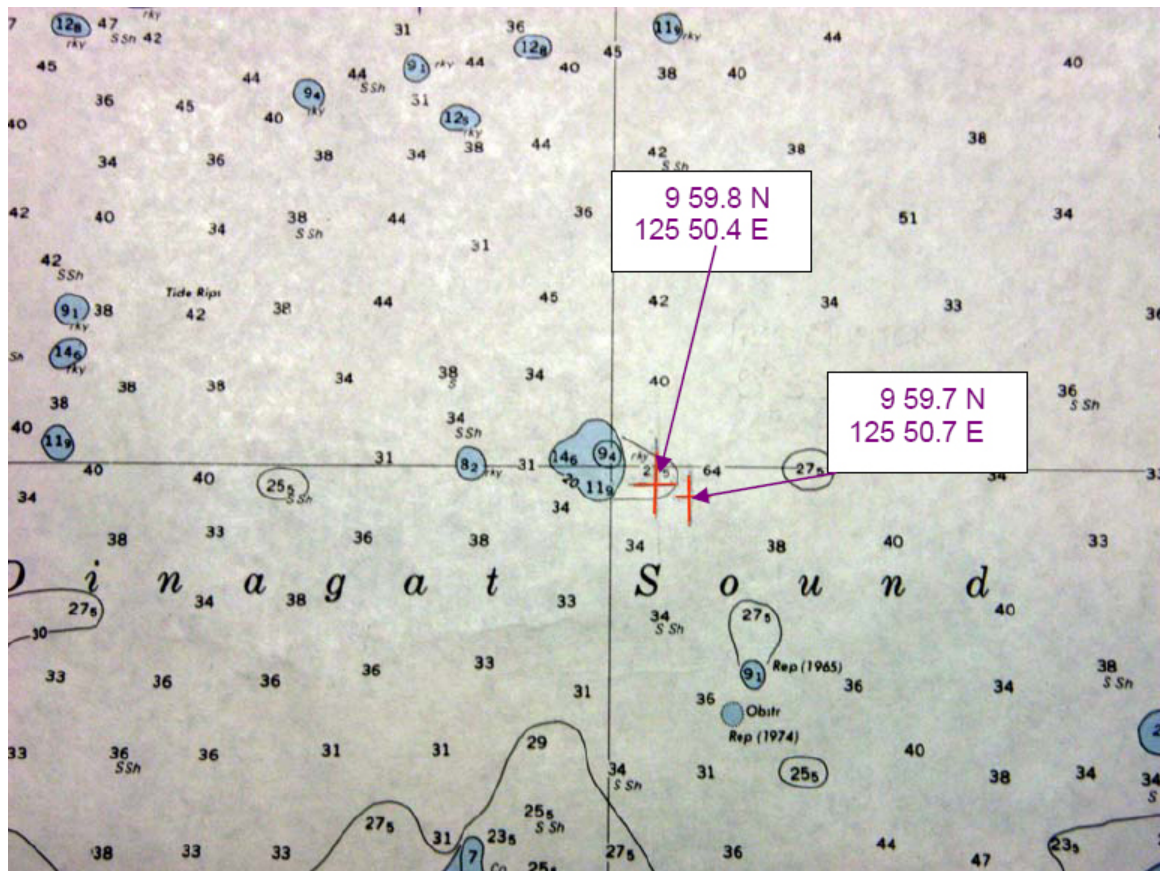
The nickel ore trade in the region has recently increased and shipments from Surigao in Mindanao (Southern Philippines) is loaded from barges at remote anchorages some distance from the port. Masters have chosen, upon departure, to transit Dinagat Sound, which is subject to strong currents and rip-tides, particularly during the monsoon period from September to February. Masters navigating these areas need to exercise extreme caution in order to prevent from grounding.

The image below illustrates the grounding area in relation to the Port of Surigao:



Both ships to ground on the reef were handymax sized bulk carriers. The first ship grounded in position 09° 59'.8 N ; 125° 50'.4 E on 23 September 2007, and the second ship grounded in position 09° 59'.7 N ; 125° 50'.7 E on 21 October 2007.

A detailed view of the grounding area (American chart 92110 – all depths in metres):



The Club's correspondent has made the UK Hydrographic Office (HO) and local authorities aware of the navigational hazard. The HO has published details in Notice to Mariners 5035 of 2007.

Source of information: Pandiman Philippines, Inc.  
Tel: +63 2 527 7831 40  
Email: [mis@pandiman.com](mailto:mis@pandiman.com)  
Internet: [www.pandiman.com](http://www.pandiman.com)