

South Korea Quarantine Regulation Update

7th January 2023

1 - Notification of Quarantine (Article 9, Quarantine Act)

The Master of the vessel* shall notify National Quarantine Station via VTS or the agent 24 hours prior to entering the port. Arrival / Departure General Declaration must be submitted upon notifying the authorities.

*The owner of the vessel / vessel's agent may notify the authority on behalf of the master.

2 - Quarantine Inspection

1. On-board Inspection

All crew members and passengers shall be subject to quarantine inspection such as temperature check and health questionnaires conducted by the National Quarantine Station upon arrival. Vessels subject to on-board inspection are as follows:

- A. Vessels with reported cases of death / crew member infection (including suspected infection crew)
- B. Vessels with seafarers that have embarked the vessel within the past 14 days
- C. Vessels without a valid 'Ship Sanitation Control Certificate'
- D. Vessels where on-board inspection is deemed necessary by the director of National Quarantine Station (NQS).

2. Electronic Quarantine

Vessels not subject to on-board inspection shall be subject to electronic quarantine. However, failing to clear the electronic quarantine shall subject the vessel to on-board inspection.

3 - Quarantine Regulation for crew changes at Korea ports

1. On-signers

- A. PCR Negative Certificate is no longer required.
- B. Q-Code is recommended to be registered prior to entrants' departure from last country.

(For entrants who did not register Q-code prior to departure shall register Q-code on his/her arrival as per the instruction of quarantine officer)

- C. PCR test on arrival is no longer mandatory but PCR test within 3 days of arrival is recommended.

2. Off-signers

- A. PCR test before / after disembarkation is no longer mandatory but PCR test within 3 days of disembarkation is recommended.

3. China exceptions

- A. For entrants departing from China including Hong Kong and Macau, Q-code is required to be registered prior to entrants' departure.
- B. For entrants departing from China including Hong Kong and Macau, valid negative PCR test certificate is required, certifying that the entrant was tested within 48 hours from departure date. (Valid RAT Test certificate by an expert, certifying that the entrant was tested within 24 hours from departure date, is also acceptable.)
- C. For entrants who have stayed at / visited China within the past 7 days, mandatory PCR test is required to be taken within 1 day of arrival.
(For entrants departing from Hong Kong and Macau, PCR test within 1 day of arrival is not mandatory but PCR test within 3 days of arrival is recommended.)
- D. For off-signers from a vessel that departed from China prior to entering Korean ports, PCR test before disembarkation is required.

4 - Actions Taken against Suspected/Confirmed COVID-19 Cases

1. Suspected COVID-19 Case

Where a crew on board is suspected of being Covid-19 positive (e.g., showing respiratory symptoms such as coughing or difficulty in breathing or fever, body temperature above 37.5°C), quarantine officer will collect specimen from the suspected individual in an isolated separate space on the vessel. Thereafter, the suspected individual will be isolated in his / her own cabin until PCR test result is received. In the case of critical condition, individual may be hospitalized forgoing the procedure upon confirmation of necessity by a medical professional.

2. Confirmed COVID-19 Case

- A. Where a crew on board is confirmed to be Covid-19 positive,
 - 1) The crew confirmed to be Covid-19 positive will be transferred to hospital / isolation facility for isolation. For Korean crew or long term stay crew, self-isolation at home is required. In circumstances such as transferring the confirmed

crew is not available due to lack of space at hospital / isolation facility, isolation on the vessel is available.

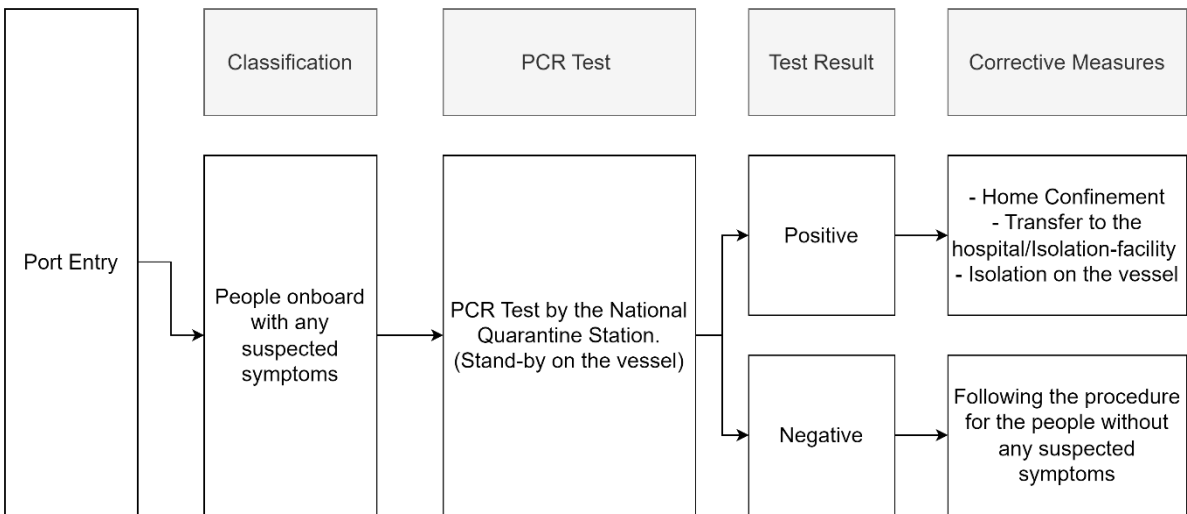
- 2) Disinfection of the vessel is required.
- 3) Movement (e.g., departure, shifting) of the vessel is prohibited until disinfection is carried out.
- 4) PCR tests will be carried out for other crew members with suspicious symptoms.
- 5) All operation such as cargo and/or repair operation is prohibited but may be allowed under the Quarantine Rules (Wearing a mask. Etc.)

* The vessel with COVID-19 infected crew onboard may choose to leave port
 However, the following information will be reported to International Health Regulation (IHR) and the vessel may be flagged as a carrier of confirmed case and/or close contacts at the next port of call.

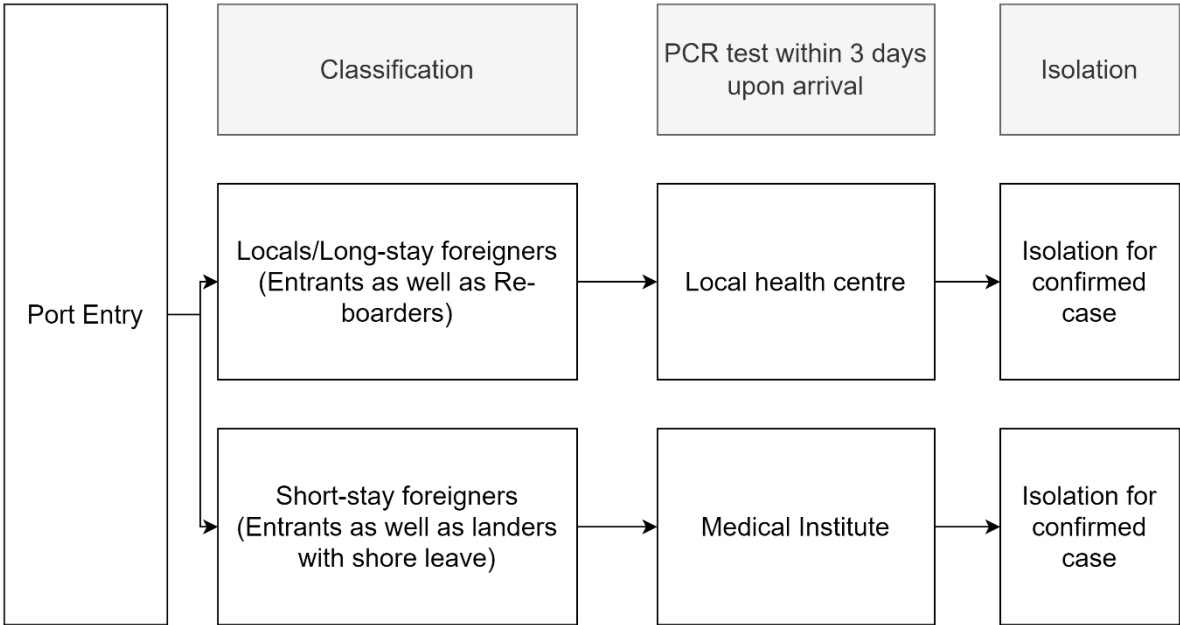
- Name of the vessel
- Name of the confirmed COVID-19 positive crew
- Nationality of the crew
- Date of confirmation as COVID-19 positive of
- Estimated time of arrival at the next port of call

5 - Flow Chart for Quarantine Procedures at port

1. People with Any Suspected Symptoms



2. People without Any Suspected Symptoms



6 - Guideline for Q-Code

- A. Q-Code website: <http://cov19ent.kdca.go.kr>
- B. Entrants entering Korea from overseas through any international airport can promptly receive the quarantine service by inputting their quarantine information using Q-Code before entry.
- C. Entrants should present their QR code upon entry to the quarantine officer.

*QR Code for the Q-CODE guideline in English

