



24 hour duty phone: +86 150 1080 6478

email: [oasis@oasispandi.com](mailto:oasis@oasispandi.com)

[www.oasispandi.com](http://www.oasispandi.com)

Shanghai Dalian Tianjin Beijing Qingdao

Guangzhou Xiamen Ningbo Hongkong

**Date: 24 January 2024**

**Oasis Circular No.: 2401**

**Subject: Expanding of fishery farms around the route to Yantai port in January 2024**

We refer to our previous circular No.: 2210 issued on 07 November 2022 in respect of route adjustment between Yantai and Weihai and alert of fishery farms to the south of the new route, a copy of which is attached.

On 12 January 2024, Shandong MSA updated the navigation warning for the fishery farms to the south of the route between Yantai and Weihai. We noted from the fresh navigation warning that since last year the areas of the fishery farms have frequently expanded at the southern edge of the route. The fishery farms are very close to the route at about 200m away from the southern edge. As the edge of the fishery farms changed in different seasons, the fishery farms may sometimes be even closer to the route.

In addition, the traffic density is high in the route. When a vessel navigates in the route to call Yantai port, she may pass through fishery farms especially when she is taking action to avoid collision in an urgent situation. If a vessel is more than 100,000 DWT, because of her size and the fishery farms are so close to the route, the risk of entering the fishery farms is higher.

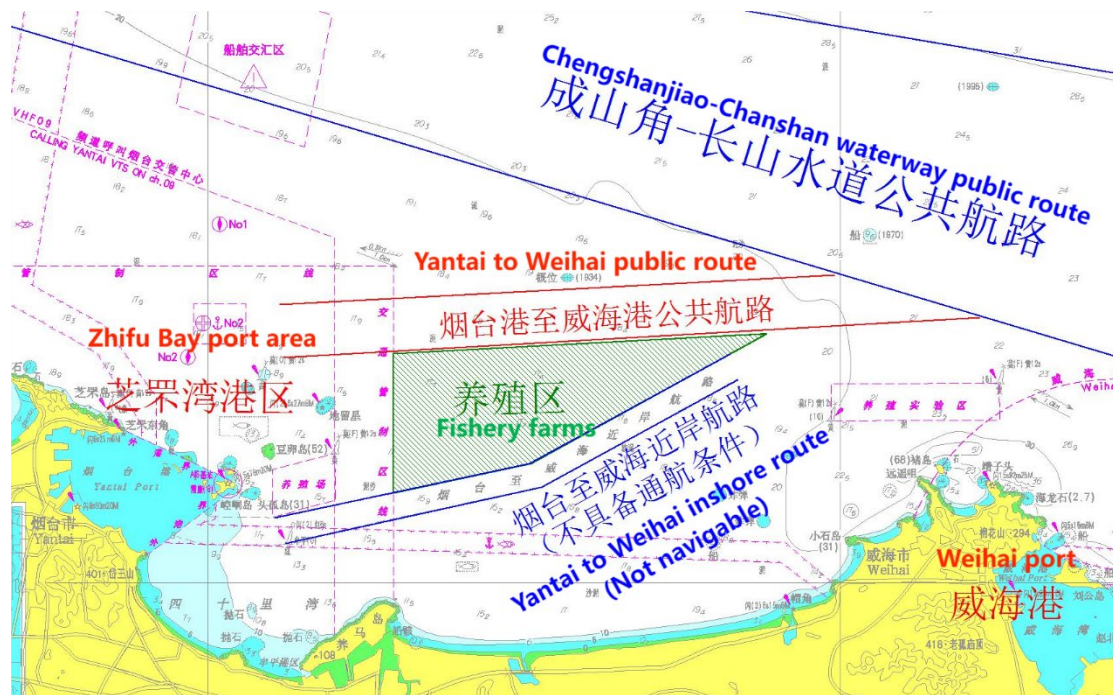
The areas of fishery farms published by MSA are listed below:

E: 37° 38' 39" N 121° 38' 48" E;

F: 37° 39' 24" N 121° 56' 30" E;

G: 37° 34' 30" N 121° 45' 20" E;

H: 37° 33' 24" N 121° 38' 48" E.



An illustration of expanded fishery farms at the southern edge of the route

### Suggestion on navigation safety

1. Vessels that call Yantai port are reminded to pay special attention to the expanded fishery farms. Crew members are suggested to maintain proper lookouts, keep nav-aids in good working condition and comply with COLREG 1972 at all times.
2. Vessels of less than 100,000 DWT are suggested to navigate in the route between Yantai and Weihai when they call Zhifu port area of Yantai port. Vessels of more than 100,000 DWT which call Zhifu port area and vessels which call Xigang port area are suggested to turn to the port area at an appropriate position which shall be away from the southern edge of the route.
3. Masters are suggested to check with their local ship agents before their vessels call at Yantai port for the latest information.

We hope the above is of assistance. If there is any query, please feel free to contact us at [oasis@oasispandi.com](mailto:oasis@oasispandi.com) anytime.

Best regards,

**Oasis P&I Services Company Limited**

**Attachment: Oasis circular 2210**



24 hour duty phone: +86 150 1080 6478

email: oasis@oasispandi.com

www.oasispandi.com

Shanghai Dalian Tianjin Beijing Qingdao

Guangzhou Xiamen Ningbo Hongkong

**Date: 07 Nov 2022**

**Oasis Circular No.: 2210**

**Subject: MSA issued notices on route adjustment between Yantai and Weihai and alert of fishery farms to the south of the new route**

### **I. Adjustment of the route between Yantai and Weihai**

In order to ensure safe navigation, the route between Yantai port and Weihai port was adjusted on 10 Feb 2022 as there were some fishery farms around the previous route. The new route applies not only to vessels which navigate between Yantai and Weihai ports but also to those which navigate between Chengshantou and Yantai port. Shandong MSA published a Notice for this adjustment on 10 Feb 2022 (ref: Lu Hang Tong (2022) No. 0059). Details of the new route are as follows:

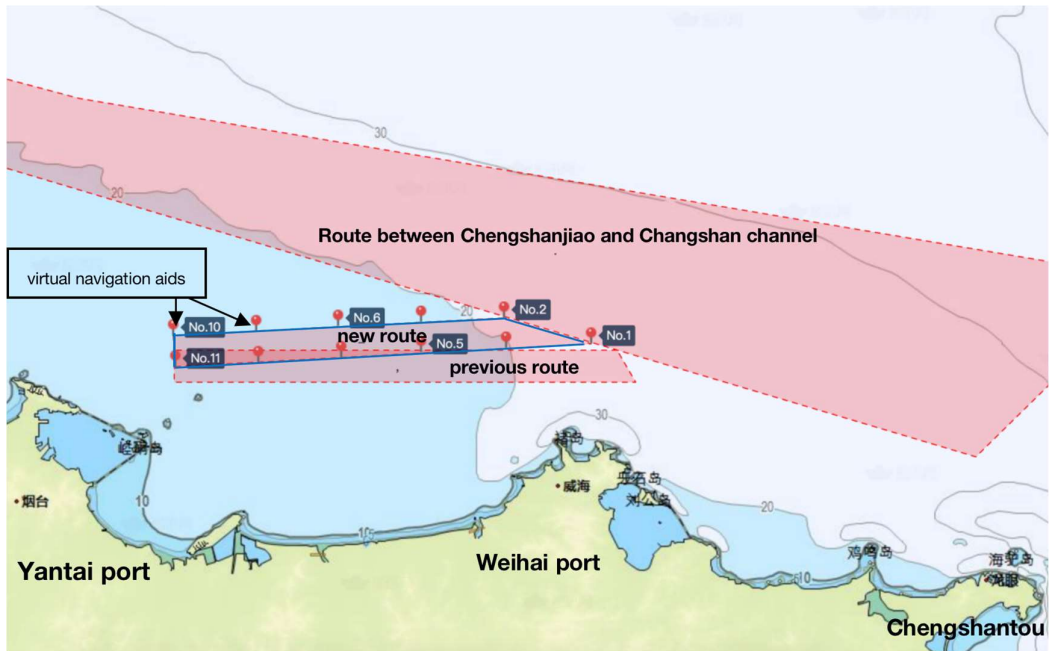
Yantai port – Weihai port	The north boundary		The south boundary		Depth on chart (m)
	Longitude(E)	Latitude(N)	Longitude(E)	Latitude(N)	
Starting point	121°33'24"	37°40'30"	121°33'36"	37°38'30"	17.3-23
End point	121°59'42"	37°41'36"	122°06'36"	37°40'00"	

Furthermore, 11 virtual navigation aids have been set on both sides of the new route. The coordinate positions and MMSI numbers of the 11 virtual navigation aids are as follows:

<b>Virtual Navigation Aid No.</b>	<b>Coordinate</b>	<b>MMSI No.</b>
No.1	37°40.00'N/122°06.60'E	994126108
No.2	37°41.60'N/121°59.70'E	994126109
No.3	37°39.71'N/121°59.85'E	994126110
No.4	37°41.33'N/121°53.12'E	994126111

No.5	37°39.42'N/121°53.31'E	994126112
No.6	37°41.06'N/121°46.55'E	994126113
No.7	37°39.12'N/121°46.74'E	994126114
No.8	37°40.78'N/121°39.97'E	994126115
No.9	37°38.81'N/121°40.17'E	994126116
No.10	37°40.50'N/121°33.40'E	994126117
No.11	37°38.50'N/121°33.60'E	994126118

As illustrated below, the new route is located to the north of the previous one.



**An illustration of the previous route and the new route**

## II. Fishery farms at the southern edge of the new route

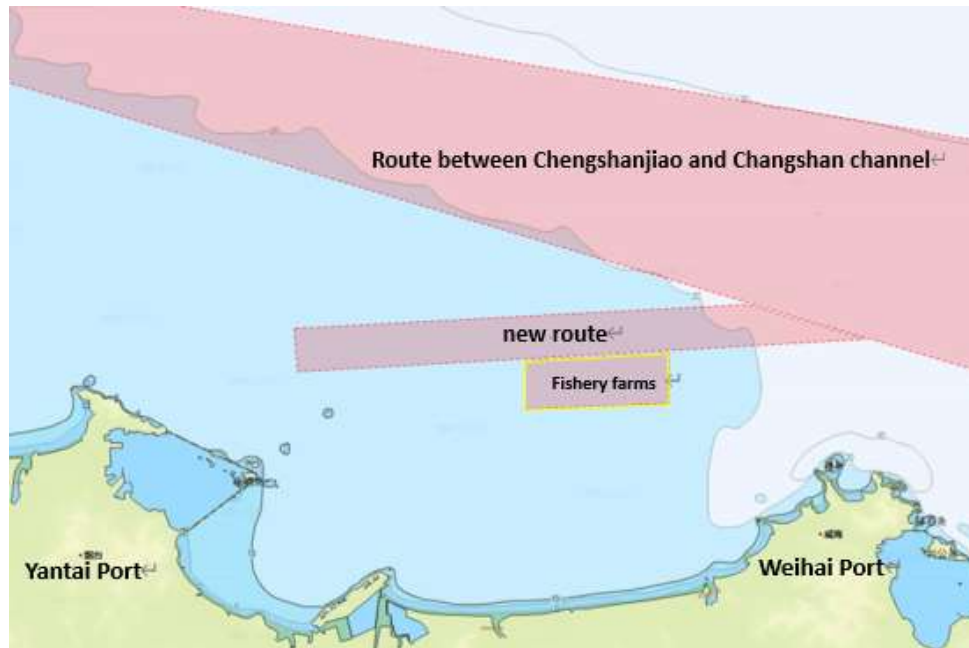
Shandong MSA further issued a notice on 06 July 2022, alerting that there are some fishery farms about 200m away from the southern edge of the new route. If a vessel navigates in the previous route, there is a high possibility that the vessel may enter into the fishery farms. It has been reported that this year some vessels which called Yantai port entered into these fishery farms when they were sailing in the previous route. According to the MSA notice, the fishery farms are mainly within the coordinates listed as follows:

A 37°38.99'N/ 121°46.83'E

B 37°39.35'N/ 121°55.17'E

C 37°37.02'N/ 121°55.17'E

D 37°36.75'N/ 121°46.83'E



An illustration of fishery farms at the southern edge of the new route

#### **Suggestions on navigation safety**

1. Vessels that call Yantai port are reminded to navigate in the new route.
2. Crew members are reminded to pay attention to the fishery farms at the edge of the new route and avoid deviation therefrom.
3. Crew members are suggested to maintain proper lookouts, keep nav-aids in good working condition and comply with the COLREG 1972 at all times.
4. When the vessel navigates in the route, pay attention to the water depth to avoid grounding.
5. The above is for reference only. Master is suggested to check with the local agent for the latest information if necessary.

We hope the above is of assistance. If there is any query, please feel free to contact us at [oasis@oasispandi.com](mailto:oasis@oasispandi.com) at any time.

Best regards,

**Oasis P&I Services Company Limited**